



Preferred ordering guide for NETCONNECT®

European Region

Table of contents

Copper solutions.....	3
Category 7/7A	3
Category 7A S/FTP cables.....	3
Category 7 S/FTP cables.....	3
Category 7 F/FTP cables.....	3
Category 6A Unshielded Solution	4
Category 6A unshielded U/UTP cables.....	4
Category 6A unshielded panels.....	4
Category 6A unshielded jacks - SL opening (without dust cover).....	5
Category 6A unshielded patch cords (LSZH).....	5
Category 6A Shielded Solution	6
Category 6A shielded S/FTP cables.....	6
Category 6A shielded F/FTP cables.....	6
Category 6A shielded F/UTP cables.....	6
Category 6A shielded panels.....	7
Category 6A shielded jacks - SL opening.....	7
Category 6A shielded patch cords.....	7
Category 6 Unshielded Solution	8
Category 6 unshielded U/UTP cables.....	8
Category 6 unshielded panels.....	8
Category 6 unshielded jacks - SL opening (without dust cover).....	9
Category 6 unshielded jacks - KJ opening (without dust cover).....	9
Category 6 unshielded patch cords (LSZH).....	9
Category 6 Shielded Solution	10
Category 6 shielded F/FTP cables.....	10
Category 6 shielded panels.....	10
Category 6 shielded jacks - SL opening.....	10
Category 6 shielded patch cords.....	10
Fiber solutions.....	11
Fiber cable.....	11
Fiber optic panels.....	12
Fiber splice cassettes.....	13
Fiber optic adapter panels.....	13
Fiber patch cords.....	14
Fiber optic pigtails.....	15
Fiber optic QWIK II Connectors®.....	15

Copper solutions

Category 7/7A



CATEGORY 7A S/FTP CABLES						
COMMSCOPE CS67 MID	MATERIAL DESCRIPTION	EUROCLASS	COLOR	PAIRS	AWG	UNIT OF MEASURE
884019038/32	CS64ZB WHT C7A 4/23 S/FTP RL 1KM	B2ca	White	4	23	Meter
884023938/32	CS64ZC WHT C7A 4/23 S/FTP RL 1KM	Cca	White	4	23	Meter
884049058/16	CS67ZB WHT C7A 4/22 S/FTP RL 500M	B2ca	White	4	22	Meter
884049438/32	CS67ZB WHT C7A 4/22 S/FTP RL 1KM	B2ca	White	4	22	Meter
884045138/32	CS67ZB ORG C7A 4/22 S/FTP RL 1KM	B2ca	Orange	4	22	Meter
884028938/32	CS67ZB YEL C7A 4/22 S/FTP RL 1KM	B2ca	Yellow	4	22	Meter
884025858/16	CS67ZC WHT C7A 4/22 S/FTP RL 500M	Cca	White	4	22	Meter
884015038/32	CS67ZC WHT C7A 4/22 S/FTP RL 1KM	Cca	White	4	22	Meter
884024938/32	CS67ZC ORG C7A 4/22 S/FTP RL 1KM	Cca	Orange	4	22	Meter
884046838/32	CS67ZC YEL C7A 4/22 S/FTP RL 1KM	Cca	Yellow	4	22	Meter
1499101-1	C7A PR4 S/FTP XG LSFZRH WHT 22 SOL 1000m	Dca	White	4	22	Meter
1711910-1	C7A S/FTP SOLID PR4 23 LSFZRH WHT 1000	Dca	White	4	23	Meter

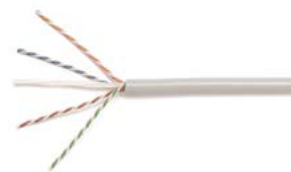
CATEGORY 7 S/FTP CABLES						
COMMSCOPE CS54 MID	MATERIAL DESCRIPTION	EUROCLASS	COLOR	PAIRS	AWG	UNIT OF MEASURE
884010858/16	CS54ZB WHT C7 4/23 S/FTP RL 500M	B2ca	White	4	23	Meter
884041038/32	CS54ZB WHT C7 4/23 S/FTP RL 1KM	B2ca	White	4	23	Meter
884011938/32	CS54ZB ORG C7 4/23 S/FTP RL 1KM	B2ca	Orange	4	23	Meter
884021358/16	CS54ZC WHT C7 4/23 S/FTP RL 500M	Cca	White	4	23	Meter
884045438/32	CS54ZC WHT C7 4/23 S/FTP RL 1KM	Cca	White	4	23	Meter
884013638/32	CS54ZC ORG C7 4/23 S/FTP RL 1KM	Cca	Orange	4	23	Meter
57893-1	C7 PR4 S/FTP XG LSFZRH WHT 23 SOL 1000M	Dca	White	4	23	Meter
57893-2	C7 PR4 S/FTP XG LSFZRH WHT 23 SOL 500M	Dca	White	4	23	Meter



CATEGORY 7 F/FTP CABLES						
COMMSCOPE CS54 MID	MATERIAL DESCRIPTION	EUROCLASS	COLOR	PAIRS	AWG	UNIT OF MEASURE
884046258/16	CS54ZB WHT C7 4/23 F/FTP RL 500M	B2ca	White	4	23	Meter
884038058/16	CS54ZB ORG C7 4/23 F/FTP RL 500M	B2ca	Orange	4	23	Meter
884016558/16	CS54ZC WHT C7 4/23 F/FTP RL 500M	Cca	White	4	23	Meter
884030658/16	CS54ZC ORG C7 4/23 F/FTP RL 500M	Cca	Orange	4	23	Meter
1711163-1	CABLE CAT7 PIMF600 LSZH 23AWG	Dca	White	4	23	Meter
1711163-2	CABLE CAT7 PIMF600 LSZH 23AWG	Dca	White	4	23	Meter
1711195-1	CA C7 2X4P PI600C SOL LSZH 23	Dca	White	4 X 2	23	Meter

Copper solutions

Category 6A Unshielded Solution



CATEGORY 6A UNSHIELDED U/UTP CABLES

COMMSCOPE CS44 MID	MATERIAL DESCRIPTION	EUROCLASS	COLOR	PAIRS	AWG	UNIT OF MEASURE
884027204/10	CS44ZB WHT C6A 4/23 U/UTP RL 305M	B2ca	White	4	23	Meter
884030804/10	CS44ZC WHT C6A 4/23 U/UTP RL 305M	Cca	White	4	23	Meter
884036104/10	CS44Z3 WHT C6A 4/23 U/UTP RL 305M	Dca	White	4	23	Meter
884026504/10	CS44Z3 GRY C6A 4/23 U/UTP RL 305M	Dca	Grey	4	23	Meter
884028704/10	CS44Z3 BLU C6A 4/23 U/UTP RL 305M	Dca	Blue	4	23	Meter



CATEGORY 6A UNSHIELDED PANELS

MATERIAL ID	PRODUCT CODE	DESCRIPTION
760237032	NPP-6A-DM-1U-24	Distribution Module Panel, Cat 6A, UTP, 1U, 24 port
760237033	NPP-6A-DM-2U-48	Distribution Module Panel, Cat 6A, UTP, 2U, 48 port
760237034	NPPA-6A-DM-1U-24	Angled Distribution Module Panel, Cat 6A, UTP, 1U, 24 port
760237035	NPPA-6A-DM-2U-48	Angled Distribution Module Panel, Cat 6A, UTP, 2U, 48 port
760237036	NPPR-6A-DM-1U-24	Recessed Angled Distribution Module Panel, Cat 6A, UTP, 1U, 24 port
760237037	NPPR-6A-DM-2U-48	Recessed Angled Distribution Module Panel, Cat 6A, UTP, 2U, 48 port
760237040	CPP-UDDM-SL-1U-24	Discrete Distribution Modular Panel, SL, UTP, 1U, 24 port
760237041	CPP-UDDM-SL-2U-48	Discrete Distribution Modular Panel, SL, UTP, 2U, 48 port
760237042	CPPA-UDDM-SL-1U-24	Angled Discrete Distribution Modular Panel, SL, UTP, 1U, 24 port
760237043	CPPA-UDDM-SL-2U-48	Angled Discrete Distribution Modular Panel, SL, UTP, 2U, 48 port
760237044	CPPR-UDDM-SL-1U-24	Recessed Angled Discrete Distribution Modular Panel, SL, UTP, 1U, 24 port
760237045	CPPR-UDDM-SL-2U-48	Recessed Angled Discrete Distribution Modular Panel, SL, UTP, 2U, 48 port

NOTE: All "DDM" style panels do not include jacks. Jacks must be ordered separately.

Copper solutions

Category 6A Unshielded Solution



CATEGORY 6A UNSHIELDED JACKS – SL OPENING (WITHOUT DUST COVER)		
MATERIAL ID	DESCRIPTION	COLOR
1933476-1	Cat 6A UTP SL Jack	Almond
1933476-2	Cat 6A UTP SL Jack	Black
1933476-4	Cat 6A UTP SL Jack	Gray
1933476-5	Cat 6A UTP SL Jack	Orange
1933476-6	Cat 6A UTP SL Jack	Blue
1933476-7	Cat 6A UTP SL Jack	Red
1933476-8	Cat 6A UTP SL Jack	Yellow
1933476-9	Cat 6A UTP SL Jack	Green
1-1933476-0	Cat 6A UTP SL Jack	Violet
1-1933476-1	Cat 6A UTP SL Jack	Electrical Ivory
1-1933476-3	Cat 6A UTP SL Jack	Alpine White



CATEGORY 6A UNSHIELDED PATCH CORDS (LSZH)		
MATERIAL ID	DESCRIPTION	COLOR
6645-2-827-##	Cat 6A, UTP, LSZH	Blue

= length in feet

Copper solutions

Category 6A Shielded Solution



CATEGORY 6A SHIELDED S/FTP CABLES						
COMMSCOPE CS44 MID	MATERIAL DESCRIPTION	EUROCLASS	COLOR	PAIRS	AWG	UNIT OF MEASURE
884016838/32	CS44ZB WHT C6A 4/23 S/FTP RL 1KM	B2ca	White	4	23	Meter
884036638/32	CS44ZC WHT C6A 4/23 S/FTP RL 1KM	Cca	White	4	23	Meter



CATEGORY 6A SHIELDED F/FTP CABLES						
COMMSCOPE CS44 MID	MATERIAL DESCRIPTION	EUROCLASS	COLOR	PAIRS	AWG	UNIT OF MEASURE
884048458/16	CS44ZB WHT C6A 4/23 F/FTP RL 500M	B2ca	White	4	23	Meter
884035958/16	CS44ZC WHT C6A 4/23 F/FTP RL 500M	Cca	White	4	23	Meter
884041954/16	CS44Z3 WHT C6A 4/23 F/FTP RL 500M	Dca	White	4	23	Meter



CATEGORY 6A SHIELDED F/UTP CABLES						
COMMSCOPE CS44 MID	MATERIAL DESCRIPTION	EUROCLASS	COLOR	PAIRS	AWG	UNIT OF MEASURE
884026704/10	CS44ZB WHT C6A 4/23 F/UTP RL 305M	B2ca	White	4	23	Meter
884024804/10	CS44ZC WHT C6A 4/23 F/UTP RL 305M	Cca	White	4	23	Meter
884034054/16	CS44Z3 WHT C6A 4/23 F/UTP RL 500M	Dca	White	4	23	Meter

Copper solutions

Category 6A Shielded Solution



CATEGORY 6A SHIELDED PANELS		
MATERIAL ID	PRODUCT CODE	DESCRIPTION
760237046	CPP-SDDM-SL-1U-24	Discrete Distribution Modular Panel, SL, STP, 1U, 24 port
760237047	CPP-SDDM-SL-2U-48	Discrete Distribution Modular Panel, SL, STP, 2U, 48 port
760237048	CPPA-SDDM-SL-1U-24	Angled Discrete Distribution Modular Panel, SL, STP, 1U, 24 port
760237049	CPPA-SDDM-SL-2U-48	Angled Discrete Distribution Modular Panel, SL, STP, 2U, 48 port
760237050	CPPR-SDDM-SL-1U-24	Recessed Angled Discrete Distribution Modular Panel, SL, STP, 1U, 24 port
760237051	CPPR-SDDM-SL-2U-48	Recessed Angled Discrete Distribution Modular Panel, SL, STP, 2U, 48 port

NOTE: All "DDM" style panels do not include jacks. Jacks must be ordered separately.



CATEGORY 6A SHIELDED JACKS – SL OPENING	
MATERIAL ID	DESCRIPTION
1711716-1	Category 6AS SL Jack w/o dust cover
1711592-1	Category 6AS SL Jack w dust cover



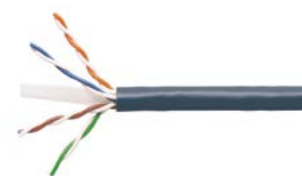
CATEGORY 6A SHIELDED PATCH CORDS		
MATERIAL ID	DESCRIPTION	COLOR
NPC6ASZDB-WT__ __ M	Cat 6A, S/FTP, LSZH	White
NPC6ASZDB-BL__ __ M	Cat 6A, S/FTP, LSZH	Blue
NPC6ASZDB-GY__ __ M	Cat 6A, S/FTP, LSZH	Gray
NPC6ASZDB-GN__ __ M	Cat 6A, S/FTP, LSZH	Green
NPC6ASZDB-OR__ __ M	Cat 6A, S/FTP, LSZH	Orange
NPC6ASZDB-RD__ __ M	Cat 6A, S/FTP, LSZH	Red
NPC6ASZDB-YL__ __ M	Cat 6A, S/FTP, LSZH	Yellow
NPC6ASZDB-BK__ __ M	Cat 6A, S/FTP, LSZH	Black

LENGTH OPTIONS

LSZH (Z) PATCH CORDS	
LENGTH (M)	INCREMENTS
0.5 – 3	50 cm.
3 – 10	1 m.
10 – 20	2 m.
20 – 35	5 m.

Copper solutions

Category 6 Unshielded Solution



CATEGORY 6 U/UTP CABLE						
MATERIAL ID	MATERIAL DESCRIPTION	EUROCLASS	COLOR	PAIRS	AWG	UNIT OF MEASURE
884015704/10	CS34ZB WHT C6 4/23 U/UTP RL 305M	B2ca	White	4	23	Meter
884016204/10	CS34ZC WHT C6 4/23 U/UTP RL 305M	Cca	White	4	23	Meter
884019714/10	CS34Z3 BLK C6 4/24 U/UTP CPK 305M	Dca	Black	4	24	Meter
884022914/10	CS34Z3 GRN C6 4/24 U/UTP CPK 305M	Dca	Green	4	24	Meter
884023914/10	CS34Z3 BLU C6 4/24 U/UTP CPK 305M	Dca	Blue	4	24	Meter
884027914/10	CS34Z3 YEL C6 4/24 U/UTP CPK 305M	Dca	Yellow	4	24	Meter
884028814/10	CS34Z3 GRY C6 4/24 U/UTP CPK 305M	Dca	Grey	4	24	Meter
884029214/10	CS34Z3 ORG C6 4/24 U/UTP CPK 305M	Dca	Orange	4	24	Meter
884032314/10	CS34Z3 WHT C6 4/24 U/UTP CPK 305M	Dca	White	4	24	Meter
884019514/10	CS34Z3 RED C6 4/24 U/UTP CPK 305M	Dca	Red	4	24	Meter
884028854/16	CS34Z3 GRY C6 4/24 U/UTP RL 500M	Dca	Grey	4	24	Meter
884028834/32	CS34Z3 GRY C6 4/24 U/UTP RL 1KM	Dca	Grey	4	24	Meter
884032354/16	CS34Z3 WHT C6 4/24 U/UTP RL 500M	Dca	White	4	24	Meter
884032334/32	CS34Z3 WHT C6 4/24 U/UTP RL 1KM	Dca	White	4	24	Meter
6-2171201-4	CAT6 UTP SOLID 4/23 LSZH WHT 305M PB	Dca	White	4	23	Meter
219584-2	C6 PR4 UTP PVC WHITE SOLID RIB305M	Eca	White	4	24	Meter
4-219584-1	C6 PR4 UTP PVC WHITE SOLID REEL500M	Eca	White	4	24	Meter



CATEGORY 6 UNSHIELDED PANELS		
MATERIAL ID	PRODUCT CODE	DESCRIPTION
760237024	NPP-6-DM-1U-24	Distribution Module Panel, Cat 6, UTP, 1U, 24 port
760237025	NPP-6-DM-2U-48	Distribution Module Panel, Cat 6, UTP, 2U, 48 port
760237026	NPPA-6-DM-1U-24	Angled Distribution Module Panel, Cat 6, UTP, 1U, 24 port
760237027	NPPA-6-DM-2U-48	Angled Distribution Module Panel, Cat 6, UTP, 2U, 48 port
760237028	NPPR-6-DM-1U-24	Recessed Angled Distribution Module Panel, Cat6, 1U, 24 port
760237029	NPPR-6-DM-2U-48	Recessed Angled Distribution Module Panel, Cat6, 2U, 48 port
760237040	CPP-UDDM-SL-1U-24	Discrete Distribution Modular Panel, SL, UTP, 1U, 24 port
760237041	CPP-UDDM-SL-2U-48	Discrete Distribution Modular Panel, SL, UTP, 2U, 48 port
760237042	CPPA-UDDM-SL-1U-24	Angled Discrete Distribution Modular Panel, SL, UTP, 1U, 24 port
760237043	CPPA-UDDM-SL-2U-48	Angled Discrete Distribution Modular Panel, SL, UTP, 2U, 48 port
760237044	CPPR-UDDM-SL-1U-24	Recessed Angled Discrete Distribution Modular Panel, SL, UTP, 1U, 24 port
760237045	CPPR-UDDM-SL-2U-48	Recessed Angled Discrete Distribution Modular Panel, SL, UTP, 2U, 48 port
760237060	NPP-UDDM-SL-1U-48	Discrete Distribution Modular Panel, SL, UTP, 1U, 48 port *
760237061	NPPA-UDDM-SL-1U-48	Angled Discrete Distribution Modular Panel, SL, UTP, 1U, 48 port *

NOTE: All "DDM" style panels do not include jacks. Jacks must be ordered separately.

* including jacks

Copper solutions

Category 6 Unshielded Solution



CATEGORY 6 UNSHIELDED JACKS – SL OPENING (WITHOUT DUST COVER)

MATERIAL ID	DESCRIPTION	COLOR
1375055-2	Category 6 UTP jack, SL	Black
1-1375055-3	Category 6 UTP jack, SL	White
1375055-6	Category 6 UTP jack, SL	Blue

CATEGORY 6 UNSHIELDED JACKS – KJ OPENING (WITHOUT DUST COVER)

MATERIAL ID	DESCRIPTION	COLOR
2291216-2	KJ Series Keystone Modular Jack, 8-position, Category 6, unshielded UTP	Black
1-2291216-3	KJ Series Keystone Modular Jack, 8-position, Category 6, unshielded UTP	White
2291216-6	KJ Series Keystone Modular Jack, 8-position, Category 6, unshielded UTP	Blue

CATEGORY 6 UNSHIELDED PATCH CORDS (LSZH)

MATERIAL ID	DESCRIPTION	COLOR
NPC06UZDB-WT___ M	Cat 6, UTP, LSZH	White
NPC06UZDB-BL___ M	Cat 6, UTP, LSZH	Blue
NPC06UZDB-GY___ M	Cat 6, UTP, LSZH	Gray
NPC06UZDB-GN___ M	Cat 6, UTP, LSZH	Green
NPC06UZDB-OR___ M	Cat 6, UTP, LSZH	Orange
NPC06UZDB-RD___ M	Cat 6, UTP, LSZH	Red
NPC06UZDB-YL___ M	Cat 6, UTP, LSZH	Yellow
NPC06UZDB-BK___ M	Cat 6, UTP, LSZH	Black

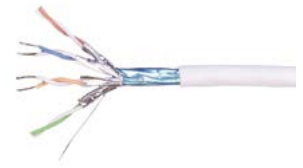
LENGTH OPTIONS

LSZH (Z) PATCH CORDS	
LENGTH (M)	INCREMENTS
0.5 – 3	50 cm.
3 – 10	1 m.
10 – 20	2 m.
20 – 35	5 m.



Copper solutions

Category 6 Shielded Solution



CATEGORY 6 F/FTP CABLES

MATERIAL ID	MATERIAL DESCRIPTION	EUROCLASS	COLOR	PAIRS	AWG	UNIT OF MEASURE
1711007-1	CABLE CAT6 4PR PIMF 250 COMPAC	Dca	White	4	23	Meter



CATEGORY 6 SHIELDED PANELS

MATERIAL ID	PRODUCT CODE	DESCRIPTION
760237046	CPP-SDDM-SL-1U-24	Discrete Distribution Modular Panel, SL, STP, 1U, 24 port
760237047	CPP-SDDM-SL-2U-48	Discrete Distribution Modular Panel, SL, STP, 2U, 48 port
760237048	CPPA-SDDM-SL-1U-24	Angled Discrete Distribution Modular Panel, SL, STP, 1U, 24 port
760237049	CPPA-SDDM-SL-2U-48	Angled Discrete Distribution Modular Panel, SL, STP, 2U, 48 port
760237050	CPPR-SDDM-SL-1U-24	Recessed Angled Discrete Distribution Modular Panel, SL, STP, 1U, 24 port
760237051	CPPR-SDDM-SL-2U-48	Recessed Angled Discrete Distribution Modular Panel, SL, STP, 2U, 48 port

NOTE: All "DDM" style panels do not include jacks. Jacks must be ordered separately.



CATEGORY 6 SHIELDED JACKS – SL OPENING

MATERIAL ID	DESCRIPTION
1711160-1	Category 6S SL Jack w dust cover
1711342-1	Category 6S SL Jack w/o dust cover



CATEGORY 6 SHIELDED PATCH CORDS (LSZH)

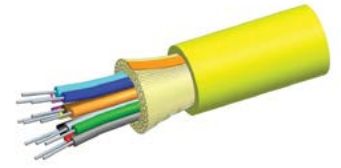
MATERIAL ID	DESCRIPTION	COLOR
NPC06SZDB-WT___ M	Cat 6, S/FTP, LSZH	White
NPC06SZDB-BL___ M	Cat 6, S/FTP, LSZH	Blue
NPC06SZDB-GY___ M	Cat 6, S/FTP, LSZH	Gray
NPC06SZDB-GN___ M	Cat 6, S/FTP, LSZH	Green
NPC06SZDB-OR___ M	Cat 6, S/FTP, LSZH	Orange
NPC06SZDB-RD___ M	Cat 6, S/FTP, LSZH	Red
NPC06SZDB-YL___ M	Cat 6, S/FTP, LSZH	Yellow
NPC06SZDB-BK___ M	Cat 6, S/FTP, LSZH	Black

LENGTH OPTIONS

LSZH (Z) PATCH CORDS	
LENGTH (M)	INCREMENTS
0.5 – 3	50 cm.
3 – 10	1 m.
10 – 20	2 m.
20 – 35	5 m.

Fiber solutions

Fiber Cable



INTERNAL/EXTERNAL LSZH		
MATERIAL ID	MATERIAL DESCRIPTION	EUROCLASS
2-599144-4	Internal/External LSZH Office Distribution Cable 4F OS2	Cca
2-599145-4	Internal/External LSZH Office Distribution Cable 6F OS2	Dca
2-599146-4	Internal/External LSZH Office Distribution Cable 8F OS2	Dca
2-599148-4	Internal/External LSZH Office Distribution Cable 12F OS2	Dca
2-1716029-4	Internal/External LSZH Office Distribution Cable 24F OS2	Dca
2-599144-3	Internal/External LSZH Office Distribution Cable 4F OM3	Cca
2-599145-3	Internal/External LSZH Office Distribution Cable 6F OM3	Dca
2-599146-3	Internal/External LSZH Office Distribution Cable 8F OM3	Dca
2-599148-3	Internal/External LSZH Office Distribution Cable 12F OM3	Dca
2-1716029-3	Internal/External LSZH Office Distribution Cable 24F OM3	Dca
2-599144-2	Internal/External LSZH Office Distribution Cable 4F OM4	Cca
2-599145-2	Internal/External LSZH Office Distribution Cable 6F OM4	Dca
2-599146-2	Internal/External LSZH Office Distribution Cable 8F OM4	Dca
2-599148-2	Internal/External LSZH Office Distribution Cable 12F OM4	Dca
2-1716029-2	Internal/External LSZH Office Distribution Cable 24F OM4	Dca
2-599623-4	Internal/External LSZH Loose Tube Cable with Non-Metallic Rodent Resistant - Gel 6F OS2	Eca
2-599624-4	Internal/External LSZH Loose Tube Cable with Non-Metallic Rodent Resistant - Gel 8F OS2	Eca
2-599625-4	Internal/External LSZH Loose Tube Cable with Non-Metallic Rodent Resistant - Gel 12F OS2	Eca
2-599627-4	Internal/External LSZH Loose Tube Cable with Non-Metallic Rodent Resistant - Gel 24 multiF OS2	Eca
2-599629-4	Internal/External LSZH Loose Tube Cable with Non-Metallic Rodent Resistant - Gel 48F OS2	Eca
2-599623-3	Internal/External LSZH Loose Tube Cable with Non-Metallic Rodent Resistant - Gel 6F OM3	Eca
2-599624-3	Internal/External LSZH Loose Tube Cable with Non-Metallic Rodent Resistant - Gel 8F OM3	Eca
2-599625-3	Internal/External LSZH Loose Tube Cable with Non-Metallic Rodent Resistant - Gel 12F OM3	Eca
2-599627-3	Internal/External LSZH Loose Tube Cable with Non-Metallic Rodent Resistant - Gel 24 multiF OM3	Eca
2-599629-3	Internal/External LSZH Loose Tube Cable with Non-Metallic Rodent Resistant - Gel 48F OM3	Eca

EXTERNAL LOOSE TUBE CABLE		
MATERIAL ID	MATERIAL DESCRIPTION	EUROCLASS
2-599682-4	External Loose Tube Cable with corrugated steel armour - rodent resistant 6F OS2	N/A
2-599692-4	External Loose Tube Cable with corrugated steel armour - rodent resistant 8F OS2	N/A
2-599683-4	External Loose Tube Cable with corrugated steel armour - rodent resistant 12F OS2	N/A
2-599690-4	External Loose Tube Cable with corrugated steel armour - rodent resistant 24F OS2	N/A
2-599682-3	External Loose Tube Cable with corrugated steel armour - rodent resistant 6F OM3	N/A
2-599692-3	External Loose Tube Cable with corrugated steel armour - rodent resistant 8F OM3	N/A
2-599683-3	External Loose Tube Cable with corrugated steel armour - rodent resistant 12F OM3	N/A
2-599690-3	External Loose Tube Cable with corrugated steel armour - rodent resistant 24F OM3	N/A
2-599142-4	Twin Zip Cable 2F OS2	N/A
2-599142-3	Twin Zip Cable 2F OM3	N/A

Fiber solutions

Fiber Optic Panels



SD PANEL AND WALL MOUNTING ENCLOSURE

MATERIAL ID	PRODUCT CODE	DESCRIPTION
760231449	SD-1U	SD 1U sliding fiber panel, accepts (3) SD splice cassettes, or ReadyPATCH adapter panels, providing up to 36 duplex LC ports or up to 24 MPO ports
760231456	SD-2U	SD 2U sliding fiber panel, accepts (6) SD splice cassettes, or ReadyPATCH adapter panels, providing up to 72 duplex LC ports or up to 48 MPO ports
760231464	SD-4U	SD 4U sliding fiber panel, accepts (12) SD splice cassettes, or ReadyPATCH adapter panels, providing up to 144 duplex LC ports or up to 96 MPO ports
760231472	SD-1U-FX	SD 1U fixed fiber panel, accepts (3) SD splice cassettes, or ReadyPATCH adapter panels, providing up to 36 duplex LC ports or up to 24 MPO ports
760231480	SD-2U-FX	SD 2U fixed fiber panel, accepts (6) SD splice cassettes, or ReadyPATCH adapter panels, providing up to 72 duplex LC ports or up to 48 MPO ports
760231498	SD-4U-FX	SD 4U fixed fiber panel, accepts (12) SD splice cassettes, or ReadyPATCH adapter panels, providing up to 144 duplex LC ports or up to 96 MPO ports
760172288	WBE-EMT-BK/1P-PLN	Wall Mount Building Enclosure, 1P, black
760147496	WBE-EMT-BK/2P-PLN	Wall Mount Building Enclosure, 2P, black
760147504	WBE-EMT-BK/4P-PLN	Wall Mount Building Enclosure, 4P, black
760147512	WBE-EMT-BK/8P-PLN	Wall Mount Building Enclosure, 8P, black



UCP PANEL

MATERIAL ID	PRODUCT CODE	DESCRIPTION
1-1671594-2	N/A	UCP Patch Panel 1RU Flush; includes grounding bolt and rear cable support bar
2111761-1	N/A	UCP Patch Panel 1RU Flush; without cable support bar
2111762-1	N/A	UCP Patch Panel 2RU Flush; without cable support bar
1671590-5	N/A	UCP Patch Panel 1RU Recessed Angled; without cable support bar
1671590-6	N/A	UCP Patch Panel 2U Recessed Angled; without cable support bar
1-1671590-1	N/A	Universal Connectivity Platform (UCP) Patch Panel, 1RU recessed angled, no support bar
1-1671594-1	N/A	Universal Connectivity Platform (UCP) Patch Panel, grounding bolt, rear cable support

Fiber solutions

Fiber Splice Cassettes



FIBER SPLICE CASSETTES COMPATIBLE WITH SD PANEL

MATERIAL ID	PRODUCT CODE	DESCRIPTION
760221739	PNL-CS-12LCX-PT	Splicing cassette, 12 LC LazrSPEED, 900µm
760221697	PNL-CS-24LCX-PT	Splicing cassette, 24 LC LazrSPEED, 900µm
760221770	PNL-CS-12SCX-PT	Splicing cassette, 12 SC LazrSPEED, 900µm
760221747	PNL-CS-12LCW-PT	Splicing cassette, 12 LC TeraSPEED, 900µm
760221705	PNL-CS-24LCW-PT	Splicing cassette, 24 LC TeraSPEED, 900µm
760221788	PNL-CS-12SCW-PT	Splicing cassette, 12 SC TeraSPEED, 900µm
760236500	PNL-CS-12LCX	Splicing cassette, 12 LC LazrSPEED, no pigtail
760236501	PNL-CS-12LCW	Splicing cassette, 12 LC TeraSPEED, no pigtail
760236502	PNL-CS-12LAW	Splicing cassette, 12 LC APC TeraSPEED, no pigtail
760236503	PNL-CS-24LCX	Splicing cassette, 24 LC LazrSPEED, no pigtail
760236504	PNL-CS-24LCW	Splicing cassette, 24 LC TeraSPEED, no pigtail
760236505	PNL-CS-24LAW	Splicing cassette, 24 LC APC TeraSPEED, no pigtail
760236506	PNL-CS-12SCX	Splicing cassette, 12 SC LazrSPEED, no pigtail
760236507	PNL-CS-12SCW	Splicing cassette, 12 SC TeraSPEED, no pigtail
760236508	PNL-CS-12SAW	Splicing cassette, 12 SC APC TeraSPEED, no pigtail

Fiber solutions

Fiber Optic Adapter Panels



FIBER OPTIC ADAPTER PANELS COMPATIBLE WITH SD PANEL

MATERIAL ID	PRODUCT CODE	DESCRIPTION
760148361	PNL-BK-024-SFA-LC02-BL-NS	Adapter Panel, Black, 1000-Type, with 12 LC DUPLEX adapters, BLUE, no shutter
760147876	PNL-BK-024-KFA-LC02-AQ-NS	Adapter Panel, Black, 1000-Type, with 12 LC DUPLEX adapters, AQUA, no shutter
760147785	PNL-BK-012-KFA-LC02-BL-NS	Adapter Panel, Black, 1000-Type, with 6 LC DUPLEX adapters, BLUE, no shutter
760149344	PNL-BK-012-MFA-LC02-AQ-NS	Adapter Panel, Black, 1000-Type, with 6 LC DUPLEX adapters, AQUA, no shutter
760147736	PNL-BK-BLANK	Adapter Panel, Black, 1000-Type, BLANK



FIBER OPTIC ADAPTER PANELS COMPATIBLE WITH UPC PANEL

MATERIAL ID	PRODUCT CODE	DESCRIPTION
1671196-1	N/A	Quick-Fit Module 6xLC-duplex Blue SM
1671202-1	N/A	Quick-Fit Module 6XLC-Quad Blue SM
1671201-1	N/A	Quick-Fit Module 6xSC-Duplex Blue SM
1671196-3	N/A	Quick-Fit Module 6xLC-duplex Aqua MM OM3/OM4
1671202-3	N/A	Quick-Fit Module 6XLC-Quad Aqua OM3/OM4
1671201-3	N/A	Quick-Fit Module 6xSC-Duplex Aqua OM3/OM4

Fiber solutions

Fiber Patch Cords



LC - LC DUPLEX SINGLE MODE		
MATERIAL ID	DESCRIPTION	FIBER TYPE
6536501-1	Fiber Optic Patch Cord, singlemode, 1.8 mm zipcord, LC/PC to LC/PC duplex tuned, 1 m	OS2
6536501-2	Fiber Optic Patch Cord, singlemode, 1.8 mm zipcord, LC/PC to LC/PC duplex tuned, 2 m	OS2
6536501-3	Fiber Optic Patch Cord, singlemode, 1.8 mm zipcord, LC/PC to LC/PC duplex tuned, 3 m	OS2
SC - SC DUPLEX SINGLE MODE		
6348260-1	Fiber Optic Patch Cord, singlemode, SC/PC-SC/PC, duplex, 2.5 mm tight cable, LSZH, 1 m, yellow	OS2
6348260-2	Fiber Optic Patch Cord, singlemode, SC/PC-SC/PC, duplex, 2.5 mm tight cable, LSZH, 2 m, yellow	OS2
6348260-3	Fiber Optic Patch Cord, singlemode, SC/PC-SC/PC, duplex, 2.5 mm tight cable, LSZH, 3 m, yellow	OS2
LC - SC DUPLEX SINGLE MODE		
6536508-1	Fiber Optic Patch Cord, singlemode, 1.8 mm zipcord, LC/PC to SC/PC duplex tuned, 1 m, yellow	OS2
6536508-2	Fiber Optic Patch Cord, singlemode, 1.8 mm zipcord, LC/PC to SC/PC duplex tuned, 2 m, yellow	OS2
6536508-3	Fiber Optic Patch Cord, singlemode, 1.8 mm zipcord, LC/PC to SC/PC duplex tuned, 3 m, yellow	OS2
LC - LC DUPLEX OM3		
6536969-1	Fiber Optic Patch Cord, LC to LC, OM3, twin zip, 1 m, aqua	OM3
6536969-2	Fiber Optic Patch Cord, LC to LC, OM3, twin zip, 2 m, aqua	OM3
6536969-3	Fiber Optic Patch Cord, LC to LC, OM3, twin zip, 3 m, aqua	OM3
SC - SC DUPLEX OM3		
6536464-1	Fiber Optic Patch Cord, OM3, SC to SC, duplex, 2.5 mm zipcord, 1 m	OM3
6536464-2	Fiber Optic Patch Cord, OM3, SC to SC, duplex, 2.5 mm zipcord, 2 m	OM3
6536464-3	Fiber Optic Patch Cord, OM3, SC to SC, duplex, 2.5 mm zipcord, 3 m	OM3
LC - SC DUPLEX OM3		
6536967-1	Fiber Optic Patch Cord, LC to SC, 1.8 mm duplex, OM3, 1 m, aqua	OM3
6536967-2	Fiber Optic Patch Cord, LC to SC, 1.8 mm duplex, OM3, 2 m, aqua	OM3
6536967-3	Fiber Optic Patch Cord, LC to SC, 1.8 mm duplex, OM3, 3 m, aqua	OM3
LC - LC DUPLEX OM4		
2160046-1	Fiber Optic Patch Cord, OM4, LC duplex to LC duplex, 1.8 mm LSZH, 1 m, aqua	OM4
2160046-2	Fiber Optic Patch Cord, OM4, LC duplex to LC duplex, 1.8 mm LSZH, 2 m, aqua	OM4
2160046-3	Fiber Optic Patch Cord, OM4, LC duplex to LC duplex, 1.8 mm LSZH, 3 m, aqua	OM4

Fiber solutions

Fiber Optic Pigtails



FIBER OPTIC PIGTAILS

MATERIAL ID	DESCRIPTION	FIBER TYPE
6536966-2	Fiber Optic Pigtail, OM3, LC/UPC-pigtail, tight buffer, 900 µm, LSZH, 2 m, aqua	OM3 LC
6536555-2	Fiber Optic Pigtail, OM3, SC-pigtail, 900 µm, LSZH, 2 m, aqua	OM3 SC
2160043-2	Fiber Optic Pigtail, OM4, SC-pigtail, 900 µm, LSZH, 2 m	OM4 SC
2160042-2	Fiber Optic Pigtail, OM4, LC-pigtail, 900 µm, LSZH, 2 m, aqua	OM4 LC
6536880-2	Fiber Optic Pigtail, Simplex, Singlemode, LC/UPC pigtail, 2 m	SM/LC
6695508-2	Fiber Optic Pigtail, singlemode, SC/PC to pigtail, 900 µm, 2 m	SM/SC

Fiber solutions

Fiber Optic QWIK II Connectors®



FIBER OPTIC QWIK II CONNECTORS®

MATERIAL ID	PRODUCT TYPE	DESCRIPTION
760117887	MFC-LCF-09-5X	BTW (QWIK II-LC) Connector, LS
760117903	MFC-LCF-09-6X	BTW (QWIK II-LC) Connector, OS
760117895	SFC-LCF-09-8X	BTW (QWIK II-LC) Connector, TS
760184697	SFC-LCF-09-8A-25-PACK	BTW (QWIK II-LC) Connector, TS, 25 pack
760117945	MFC-SCF-09-5X	BTW (QWIK II-SC) Connector, LS
760117960	MFC-SCF-09-6X	BTW (QWIK II-SC) Connector, OS
760117952	SFC-SCF-09-8X	BTW (QWIK II-SC) Connector, TS
760118000	MFC-STF-09-5X	BTW (QWIK II-ST) Connector, LS
760118026	MFC-STF-09-6X	BTW (QWIK II-ST) Connector, OS
760118018	SFC-STF-09-8X	BTW (QWIK II-ST) Connector, TS

CommScope (NASDAQ: COMM) helps design, build and manage wired and wireless networks around the world. As a communications infrastructure leader, we shape the always-on networks of tomorrow.

For more than 40 years, our global team of greater than 20,000 employees, innovators and technologists has empowered customers in all regions of the world to anticipate what's next and push the boundaries of what's possible.

Discover more at commscope.com

Créé en 2005, FCS est un acteur majeur sur le marché du câblage structuré. Avec plus de 3000 m2 d'espace de stockage, FCS dispose de plus de 10,000 références produits.

Depuis 2010, FCS est partenaire officiel de CommScope pour la distribution de la gamme NetConnect en France.

Fiber Cabling Services

8 rue Abel Gance
78390 Bois d'Arcy
France

Tél. : +33 (0)1 30 79 94 20

Mail : info@fcsgroup.fr

Web : www.fcsgroup.fr

COMMSCOPE®



Fiber Cabling Services

commscope.com

Visit our website or contact your local CommScope representative for more information.

© 2018 CommScope, Inc. All rights reserved.

Unless otherwise noted, all trademarks identified by ® or ™ are registered trademarks, respectively, of CommScope, Inc. This document is for planning purposes only and is not intended to modify or supplement any specifications or warranties relating to CommScope products or services. CommScope is committed to the highest standards of business integrity and environmental sustainability with a number of CommScope's facilities across the globe certified in accordance with international standards, including ISO 9001, TL 9000, and ISO 14001. Further information regarding CommScope's commitment can be found at www.commscope.com/About-Us/Corporate-Responsibility-and-Sustainability.

CO-112609-EN (03/18)